

No. 101

Welcome:

Spectral Dynamics (SD) was founded in 1961 to furnish instrumentation to the vibration Testing and Analysis communities. This year, as we celebrate our 40th anniversary, SD offers a unique combination of experience and innovation in the products we design, manufacture and market. Today's SD has two manufacturing plants in California and offices throughout the world to offer Sales, Service and Training support.

Where are we?

Headquarters: 1010 Timothy Drive San Jose, CA.
(PH) 408-918-2500; (FAX) 408-918-2580

Design and development of all workstation-based Acquisition and Control systems; Manufacture of all products except PIND; Accounting & Shipping.

Southern California: 1300 Rancheros Drive San Marcos, CA. (PH)760-745-7600(FAX)760-745-0959
Design and development of PC-based Analysis and Control products; Design and manufacture of PIND (Particle Impact Noise Detection) systems; International Sales and Marketing.

DSP Products: 43116 Christy Street Fremont, CA.
(PH) 510-252-0475; (FAX) 510-252-0474

Design and development of high speed VXI-based sampling & storage systems.

Western Regional Sales & Service: 1528 Hwy 395, Ste 105, Gardnerville, NV; (FAX) 775-783-9305

Sales: Todd Davis 775-783-9634

Service: Paul Hawk 775-783-8134

Bill Karr 760-745-7600 X18

Central Regional Sales & Service: 10315 E. Grand River, Ste 204, Brighton, MI; (FAX) 810-229-2805

Sales: Russ Ruhnow 810-229-3384;

Service:

Eastern Regional Sales & Service: 23008 Oak Prairie Circle, Sorrento, FL; (FAX) 352-385-1678

Sales: Bob Cincotta 352-385-1677

Service: Kevin Shaper (410) 552-1745 (PH)

International Sales: (FAX) 760-745-0959

Sales: Tony Keller 760-745-7600 X15

France Office: 19 Avenue de L'île St. Martin
92737 Nanterre, Cedex, France; (PH) 011-33
1 4652 2780; (FAX)011 33 1 4652 2781

Germany Office: Peter-Henlein Strasse 24
85540 Haar bei Munchen, Germany; (PH)011
4989 462 3600 (FAX) 011 49 89 4623 6030

UK Office: Fulling Mill; Fulling Mill Lane,
Welwyn, Hertfordshire, AL69NP, England UK
(PH) 011 44 1438 716626 (FAX) 716628

Worldwide Sales Representatives: Check our website at www.spectraldynamics.com for a complete listing of Sales Representatives.

What do we make?

PRODUCTS:

Spectral Dynamics designs and manufactures a wide range of hardware and software products for Data Acquisition, Modal Analysis and Vibration Test Control.

1. Windows®-based:

- A. PUMA – 4 to 32 channel real-time Analyzer and Controller. Wonderful displays and Network connectivity.
- B. COUGAR 10 – 4 or 10 channel portable Analyzer and Controller
- C. PANTHER – 4, 10 or 16 channel Analyzer with dual, uncorrelated outputs optimized for Modal

2. Matlab® - based:

- A. SigLab 20-21; 2 channel, 50kHz Analyzer with flexible displays and data formats; expandable.
- B. SigLab 20-42: 4 channel, 20 kHz Analyzer with great performance, expandable to 8, 12, 16 channels

3. UNIX – based:

- A. JAGUAR – 8 to 98 channel real-time Acquisition and Control System. For single and multiple shaker control; expandable to hundreds of Acquisition channels. Flexible ICP®, incredible Phase match and Disk Throughput.

4. VXI – based:

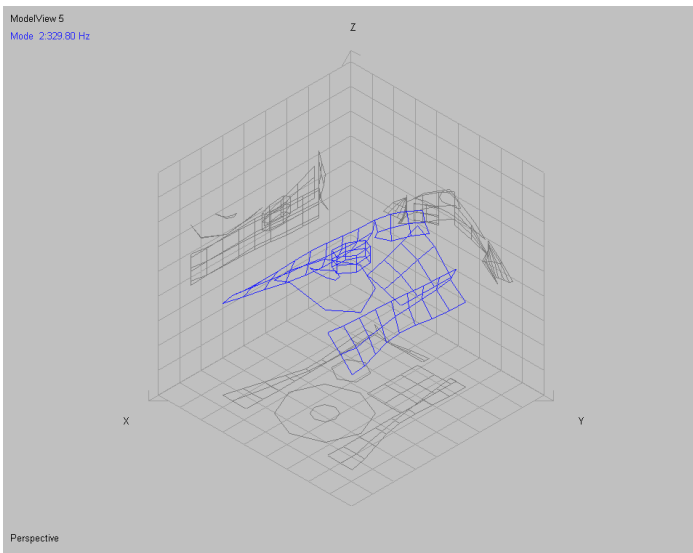
- A. VX2824 – 8 to 32 channel Acquisition, storage and processing system with 2.5 Msamp/sec/chan sampling and 16 Msamp/chan local storage. Flexible triggering and input signal conditioning.

TRAINING SEMINARS: Spectral Dynamics conducts a series of Training Seminars throughout the year in various US locations including an Advanced Modal Analysis seminar in San Diego. For a complete Seminar listing check www.spectraldynamics.com .

FEATURED PRODUCT:

CATS Modal V1.0 and **STAR V6.0**

SD has just introduced a brand new Modal Analysis product based on the extremely popular **STAR** System and the SD-produced GraphTool™ Graphical User’s Interface. This combination adds a whole new colorful dimension to real-time Modal animation, Frequency Response Function viewing and cursor operations. This enhanced graphical flexibility now permits Structural Dynamics Modification to be performed while viewing the Model and seeing the attachment points as well as the immediate effects of the modification.

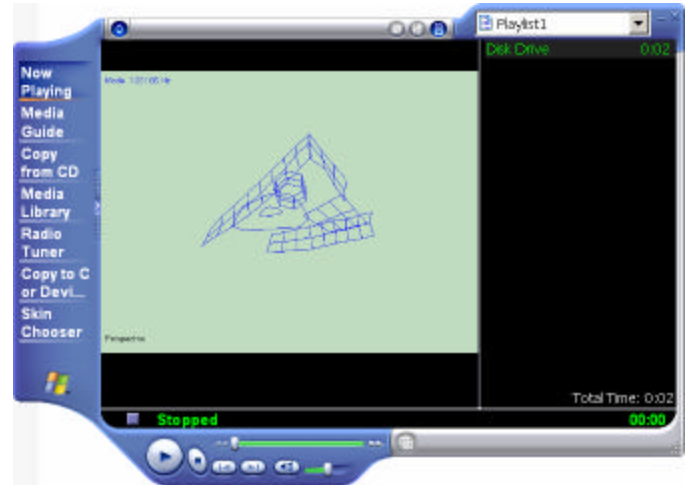


2nd mode shown in perspective plus 3 planar projections

In the example above, a computer hard drive has been modeled using 6 subassemblies with 112 data points. The 2nd Mode is shown as an isometric projection and also projected onto the 3 major axes, all with simultaneous animation. Just this one display thus produces an incredible amount of Modal deformation information.

Modal Assurance Criteria (MAC) are now shown in a convenient threshold format and displays include Time Domain Animation (TDA) , Operating Deflection Shapes (ODS), Forced Response Synthesis, Sinusoidal Response and a Mode Calculator.

A simple means of creating an AVI file, easily read in Windows™ is now included as a standard feature. An example of this is shown below.



Now animated Mode Shapes can easily be e-mailed to colleagues or inserted into a “Live Report”. Please contact your nearest Spectral Dynamics Sales office or Sales Representative for a demonstration of this powerful new system or download the relevant information at:

www.spectraldynamics.com

A free demo CD of the **STAR** System is available by contacting star6sales@sd-star.com or by calling 408-918-2540 .

T TRADE SHOWS:

Visit Spectral Dynamics at the 73rd Shock and Vibration Symposium, November 18-21, 2002 in Newport Rhode Island. SD will be showing selected lines of single and multiple shaker Control Systems and Modal Analysis products.